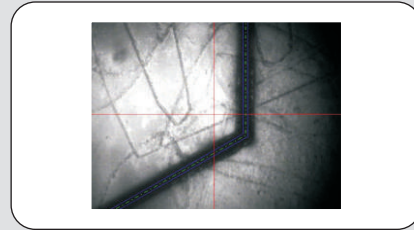
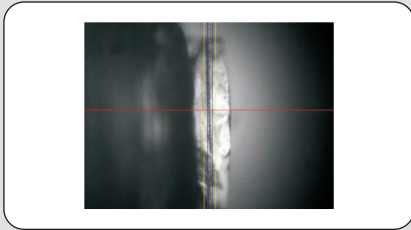




Arete saw



ઓપરેશન :

- પાથ સોઇંગ • ઓટો ડેપ્થ
- મલ્ટી સાઇડ બેન્ડીંગ
- મલ્ટી ફોક્સ બેન્ડીંગ • ઓટો પાવર

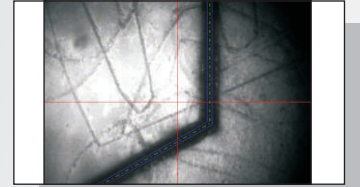
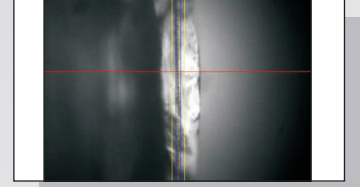
Technical Specification

Laser Source		75W CW
Laser Type		DPSSL
Wave Length	mm	1064
Beam Mode		TEM00
Working Power	watt	4 - 18
CNC Table	mm	135x135
Resolution	micron	± 2
Repeatability	micron	± 2
Accuracy	micron	± 1
Drive Type		AC SERVO / D.C. SERVO
Z Axis Travel	mm	70
Power Supply		1 Phase, 15 AMP
Power Consumption	kw	1.7
Operating Environment :		
Temperature / Humidity	celsius	20 - 30 / <60%
Coolant Requirement	lt/min.	4 - 6
Dimension	mm	880 x 1560 x 1550
Computer System: Intel Core2Duo, 17" LCD		

*Technical Specification are subject to change without prior notice.

મશીનની વિશેષતાઓ :

- પાઇ સોઇંગની ફેસેલીટી (એક જ સેટીંગમાં)
- મલ્ટી ફોકસ બેન્ડીંગ
- USB બેઇઝ હોવાથી ફાસ્ટ પ્રોડક્ટીવીટી
- ઓટો ડેપ્થ હોવાથી વેઇટ લોસ કંટ્રોલ કરી શકાય
- યુઝર ફ્રેન્ડલી સોફ્ટવેર



VISION EMBESFT SOLUTION

Head Office :

B-106, Electronic Estate, G.I.D.C.,
Sector-25, Gandhinagar-382024. Gujarat. INDIA.
(O) 079 2975 0138,
E-mail : info@vesindia.org,
info@visionembesoft.org,
Website : www.vesindia.org

Branch Office :

Plot No-19, Nava Faliyu,
B/h Dholakiya Garden, Nr. Vala Vadi,
Katargam, Surat-395004. Gujarat. INDIA
Mo.: +91 90999 97893,
E-mail : marketing@vesindia.org